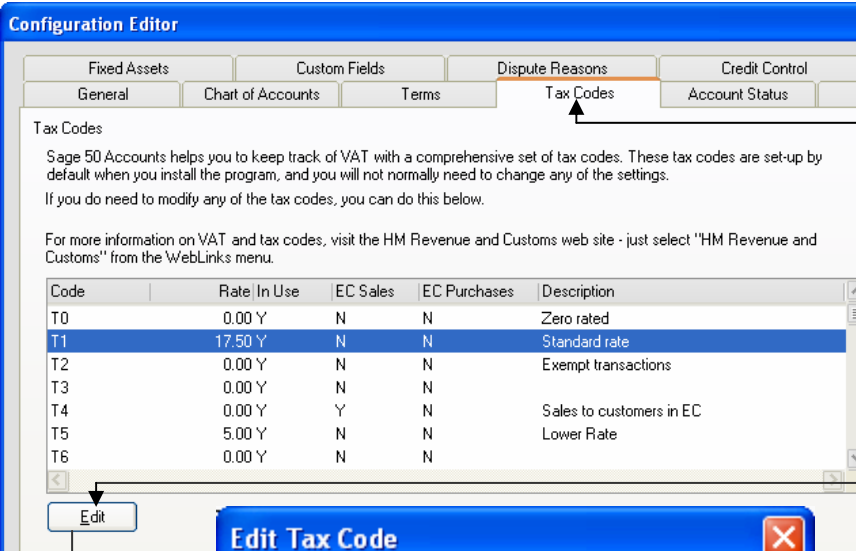
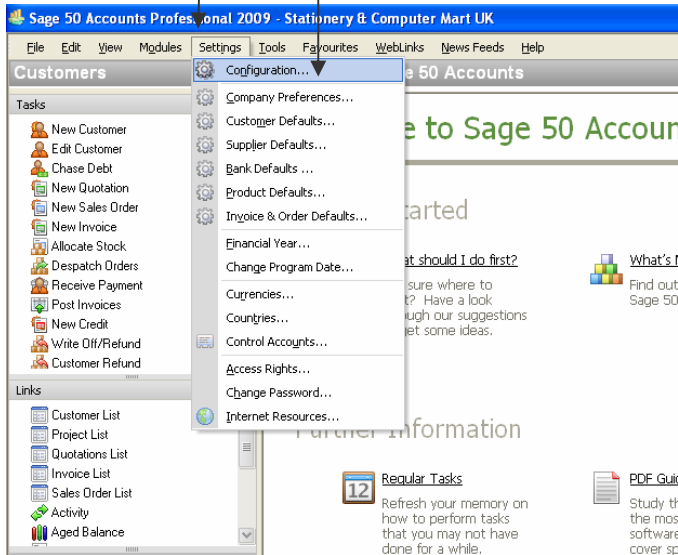
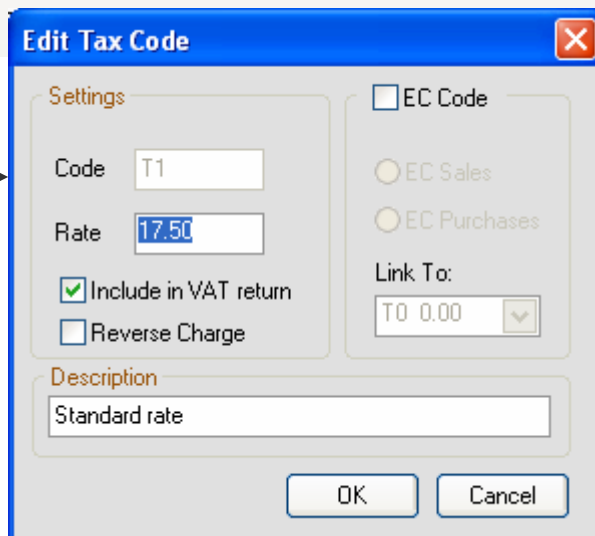


To change the Vat Rate in Sage50 2008\2009

Click on **Settings** then **Configuration**



Click on the **Tax Codes** tab, select **T1** and Click on **Edit**



Edit Tax Code

Settings

Code: T1

Rate: 15.00

Include in VAT return

Reverse Charge

EC Code

EC Sales

EC Purchases

Link To: TO 0.00

Description: Standard rate

OK Cancel

Change the Rate from **17.50** to **15.00** and click on **OK**

Configuration Editor

Fixed Assets | Custom Fields | Dispute Reasons | Credit Control | Project Costing

General | Chart of Accounts | Terms | Tax Codes | Account Status | Products

Tax Codes

Sage 50 Accounts helps you to keep track of VAT with a comprehensive set of tax codes. These tax codes are set-up by default when you install the program, and you will not normally need to change any of the settings.

If you do need to modify any of the tax codes, you can do this below.

For more information on VAT and tax codes, visit the HM Revenue and Customs web site - just select "HM Revenue and Customs" from the Weblinks menu.

Code	Rate	In Use	EC Sales	EC Purchases	Description
T0	0.00	Y	N	N	Zero rated
T1	15.00	Y	N	N	Standard rate
T2	0.00	Y	N	N	Exempt transactions
T3	0.00	Y	N	N	
T4	0.00	Y	Y	N	Sales to customers in EC
T5	5.00	Y	N	N	Lower Rate
T6	0.00	Y	N	N	

Edit

Save Save As Apply Close

Press 'Apply' to use this configuration on your accounts data.
Press 'Save' or 'Save As' to create a configuration file to use on other accounts data sets.

Click on **Apply** and **Close**



Ashgoal Ltd
Unit C | Queen Road
Barnet | Herts | EN5 4DJ

t. 08442 459 100
f. 08442 459 171
e. enquiries@ashgoal.com
w. www.ashgoal.com